

# ***Seas of the North Isles: Prehistoric Seafaring and Early Colonisation***

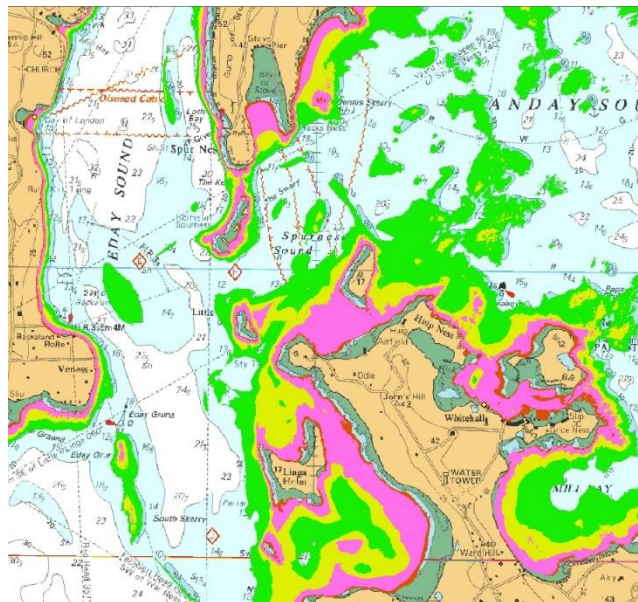
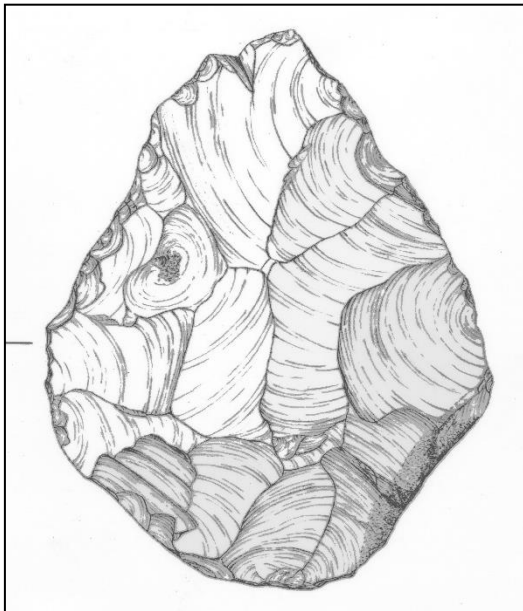
**Talk Wednesday 13th October at 7:00pm in the Community Hall**

Learn about the changes in landscape during prehistoric times and the islands that early colonisers would have found. Look at prehistoric watercraft and how people may have travelled here millennia ago. We will also look at some of the earliest known sites in the North isles to paint a picture of what life was like for Orkney's earliest residents.

**Workshop Thursday 14th October at 9:30am in the Meeting room at Community Hall**

Take a closer look at your island and its changes over the past 10,000 years. This half day workshop will include some indoor learning and discussion followed by a site visit to put our knowledge into practice.

**Everyone welcome!**



For more information or if you would like to **register for an event**, please email [n.bain@wessexarch.co.uk](mailto:n.bain@wessexarch.co.uk) or call 0330 313 3568

